

For ordering assembled PCB from JLC you need the Gerber ZIP file

Go to <https://jlcpcb.com/> log in (or register) and select ,QUOTE NOW'

J@LC JLCPCB HOME CAPABILITIES ABOUT US SUPPORT ▾ RESOURCES ▾

PCB SMT-Stencil

Add your gerber file

Only accept zip or rar, Max 10 M

[Instructions for ordering](#)

[Upload History >>](#)

Layers ? 1 2 4 6

Dimensions ? 100 * 100 mm ▾

PCB Qty ? 5 ▾

Different Design ? 1 2 3 4

Delivery Format ? Single PCB Panel by Customer Panel by JLCPCB

Click ,Add your Gerber File' and select the Gerber ZIP file provided.

On successfull load JLC will show you the board design and the correct dimensions

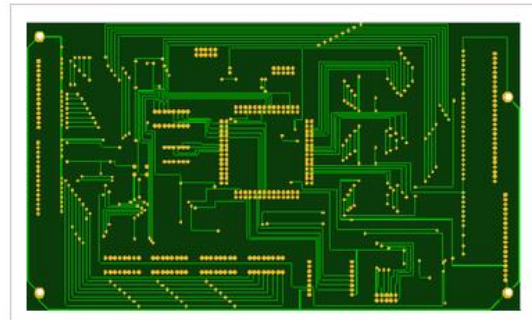
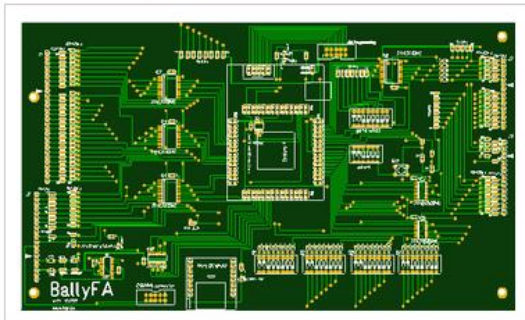
Note:

Check if you have valid dimensions as in the example below (6.1x10.43 inches in this case). Sometimes the JLC loader does not recognize PCB border outline and cannot calculate the dimensions.

In this case just repeat the upload, in most cases the error will go away.

Detected 2 layer board of 155x265mm(6.1x10.43 inches) .

Your upload has finished processing. Enter the project details below and we'll move on to checking all the individual layers to make sure that they're correct.



[Gerber Viewer](#) 

✔ Success, this file has been saved to your [File Manager](#)

[<< Back to Upload File](#)

Layers 

Dimensions  *

PCB Qty  

You may want to change the quantity here.

Layers ?

Dimensions ? *

PCB Qty ?

Different Design ?

Delivery Format ?

PCB Thickness ?

PCB Color ?

Surface Finish ?

Copper Weight ?

Gold Fingers ?

Material Type ?

Confirm Production file ?

Flying Probe Test ?

Castellated Holes ?

Remove Order Number ?

Go with the defaults for the other values and click 'Save to Cart' on the right side.

During the checkout process you will be asked about the shipping method.

DDP (Customs clearance, duty and customs fees handled by JLCPCB.)

EuroPacket 6-8 bussiness days

Custom duty and tax will be pre-paid, company users will be free of TAX if company VAT number are entered in shipping address.

Pre-pay customs duties & taxes(DDP)

DHL Express Priority (DDP) 2-4 business days

There will be DDP service fee included in Customs Duties & Taxes. DDP service will help to expedite custom clearance and pre-pay the custom & tax fee. Company users are not advised to use DDP service for the invoice of Duties & Taxes cannot be provided for deduction.

Pre-pay customs duties & taxes(DDP)

· Have different orders combined in a single shipment, to click "+ Add new item" button on Order History page after submitting the order.

[Back to Cart](#) [Continue](#)

For Germany I recommend to select ,Europacket' with ,Pre-pay customs duties & taxes(DDP)